

DC Series

Deep Cycle series batteries are designed to have a large amount of stored current discharged between charging sessions, with very heavy non-porous battery plates to withstand repeated major discharging and charging cycle(deep cycle). The Deep-cycle batteries uses a different chemistry for the plates active paste material, and a slightly stronger electrolyte than normal battery electrolyte, which allows for a much longer life in deep cycle applications.

DC121500

(12V150Ah/10hr)

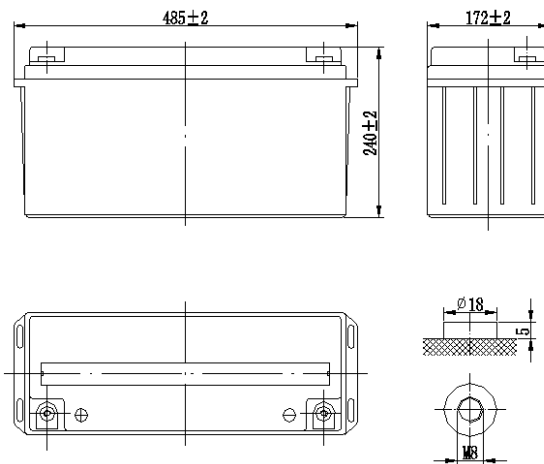


Application

- E-Bike
- Alarm System
- Cable Television
- Power tools
- Emergency Power System
- Security System
- Golf Cars
- Medical Equipment
- Solar and Wind Power System
- Communication Equipment
- Control Equipment
- Toys

General Features

- Sealed and maintenance free operation.
- Non-Spillable construction design.
- ABS containers and covers optional.
- Safety valve installation for explosion proof .
- High quality and high reliability.
- Exceptional deep discharge recovery performance.
- Low self discharge characteristic.
- Flexibility design for multiple install positions.



CONSTRUCTION

Component	Positive plate	Negative plate	Container	Cover	Safety valve	Terminal	Separator	Electrolyte
Raw material	Lead dioxide	Lead	ABS	ABS	Rubber	Copper	Fiberglass	Sulfuric acid

TECHNOLOGY PARAMETER

Battery model	DC121500			
Designed Cycle Life	> 350 Cycles @ -0.5CA to 9.6V			
Capacity (25 °C)	20hR(7.68A, 10.5V)	10hR(15A, 10.5V)	5hR(24A, 10.5V)	1hR(96.7A, 9.60V)
	153.6Ah	150.0Ah	120Ah	96.7Ah
Dimensions	Length	Width	Height	Total Height
	485 ±2mm	172 ±2mm	240 ±2mm	240 ±2mm
Approx. weight (±5%)	43.0Kg			
Internal resistance	Full charged at 25°C: Approx. 4mOhms			
Self discharge	3% of capacity declined per month at 25°C (average)			
Capacity Affected by Temp.(20HR)	40 °C	25 °C	0 °C	-15 °C
	102%	100%	85%	65%
Charge Voltage (25°C)	Cycle use		Float use	
	14.4-14.7V(-30mV/°C), max. Current:37.5A		13.5-13.8V(-20mV/°C)	

DC121500-(12V150Ah/10hr)

Constant current discharge ratings-amperes at 25°C

End Point Volts/Cell	5min	10min	15min	30min	1h	3h	5h	10h	20h
1.60V	467	372	283	179	110	46.1	28.1	15.5	7.87
1.65V	444	355	269	176	106	44.6	27.3	15.3	7.81
1.70V	418	335	255	172	102	43.1	26.6	15.2	7.75
1.75V	391	315	241	169	97.9	41.3	25.8	15.1	7.69
1.80V	365	299	228	166	93.8	39.4	25.0	15.0	7.63

Constant power discharge ratings-watts at 25°C

End Point Volts/Cell	5min	10min	15min	30min	1h	3h	5h	10h	20h
1.60V	836	669	512	326	201	84.9	52.0	28.7	14.7
1.65V	790	635	484	318	193	81.7	50.3	28.3	14.5
1.70V	739	596	457	310	185	78.5	48.6	27.9	14.3
1.75V	689	558	430	302	176	74.7	46.9	27.5	14.2
1.80V	639	525	403	295	168	71.0	45.3	27.1	14.0

