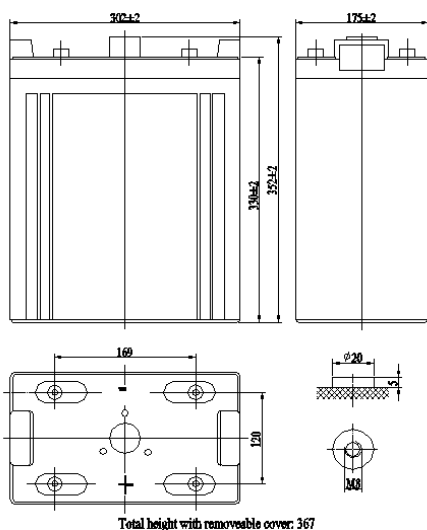


### SL26000

(2V600Ah/10hr)



The rechargeable batteries are lead-lead dioxide systems. The dilute sulfuric acid electrolyte is absorbed by separators and plates and thus immobilized. Should the battery be accidentally overcharged producing hydrogen and oxygen, special one-way valves allow the gases to escape thus avoiding excessive pressure build-up. Otherwise, the battery is completely sealed and is, therefore, maintenance-free, leak proof and usable in any position

#### General Features

- Sealed and maintenance free operation.
- Non-Spillable construction design.
- ABS containers and covers(UL94HB, UL94V-0) optional.
- Safety valve installation for explosion proof .
- High quality and high reliability.
- Exceptional deep discharge recovery performance.
- Low self discharge characteristic.
- Flexibility design for multiple install positions.

#### Application

- Alarm System
- Cable Television
- Power tools
- Emergency Power System
- Security System
- Medical Equipment
- UPS
- Communication Equipment
- Control Equipment
- Toys

#### CONSTRUCTION

Component	Positive plate	Negative plate	Container	Cover	Safety valve	Terminal	Separator	Electrolyte
Raw material	Lead dioxide	Lead	ABS	ABS	Rubber	Copper	Fiberglass	Sulfuric acid

#### TECHNOLOGY PARAMETER

Battery model	SL26000			
Designed Floating Life	15 Years			
Capacity (25℃)	10hR(60A, 1.8V)	5hR(108A, 1.75V)		1hR(364A, 9.60V)
	600Ah	540Ah		364Ah
Dimensions	Length	Width	Height	Total Height
	302 ±2mm	175 ±2mm	330 ±2mm	367 ±2mm
Approx. weight (±5%)	38 Kg			
Internal resistance	Full charged at 25℃: 0.45mOhms			
Self discharge	3% of capacity declined per month at 25℃ (average)			
Capacity Affected by Temp.(10HR)	40℃	25℃	0℃	-15℃
	102%	100%	85%	65%
Charge Voltage (25℃)	Cycle use		Float use	
	2.35-2.45V(-5mV/℃), max. Current: 120A		2.25-2.30V(-3.3mV/℃)	

### SL26000 (2V600Ah/10hr)

Constant current discharge ratings-amperes at 25°C

End Point Volts/Cell	15min	30min	1h	2h	3h	4h	5h	8h	10h
1.60V	887	618	364	231	186	142	115	77.5	65.0
1.65V	844	590	351	224	181	139	113	76.3	64.0
1.70V	800	562	337	215	174	135	111	75.0	63.0
1.75V	755	533	322	206	167	130	108	72.8	61.0
1.80V	710	503	307	197	160	126	105	71.3	60.0

Constant power discharge ratings-watts at 25°C

End Point Volts/Cell	15min	30min	1h	2h	3h	4h	5h	8h	10h
1.60V	1424	1123	710	483	358	275	225	149	124
1.65V	1347	1067	680	472	349	270	222	147	122
1.70V	1269	1009	649	460	340	264	218	145	120
1.75V	1191	951	617	446	330	258	214	141	117
1.80V	1112	892	583	418	309	248	211	139	115

