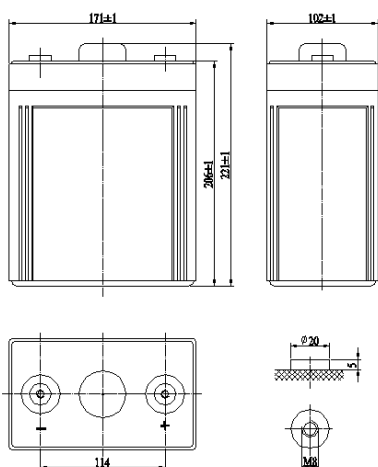


SL21500

(2V150Ah/10hr)



The rechargeable batteries are lead-lead dioxide systems. The dilute sulfuric acid electrolyte is absorbed by separators and plates and thus immobilized. Should the battery be accidentally overcharged producing hydrogen and oxygen, special one-way valves allow the gases to escape thus avoiding excessive pressure build-up. Otherwise, the battery is completely sealed and is, therefore, maintenance-free, leak

General Features

- Sealed and maintenance free operation.
- Non-Spillable construction design.
- ABS containers and covers(UL94HB, UL94V-0) optional.
- Safety valve installation for explosion proof .
- High quality and high reliability.
- Exceptional deep discharge recovery performance.
- Low self discharge characteristic.
- Flexibility design for multiple install positions.

Application

- Alarm System
- Cable Television
- Power tools
- Emergency Power System
- Security System
- Medical Equipment
- UPS
- Communication Equipment
- Control Equipment
- Toys

CONSTRUCTION

| Component | Positive plate | Negative plate | Container | Cover | Safety valve | Terminal | Separator | Electrolyte |
|--------------|----------------|----------------|-----------|-------|--------------|----------|------------|---------------|
| Raw material | Lead dioxide | Lead | ABS | ABS | Rubber | Copper | Fiberglass | Sulfuric acid |

TECHNOLOGY PARAMETER

| | | | | |
|-------------------------------------|---|-----------------|-----------------------|-------------------|
| Battery model | SL21500 | | | |
| Designed Floating Life | 15 Years | | | |
| Capacity (25°C) | 10hR(15A, 1.8V) | 5hR(27A, 1.75V) | | 1hR(97.5A, 9.60V) |
| | 150Ah | 135Ah | | 97.5Ah |
| Dimensions | Length | Width | Height | Total Height |
| | 172 ±2mm | 102 ±2mm | 205 ±2mm | 221 ±2mm |
| Approx. weight (±5%) | 8Kg | | | |
| Internal resistance | Full charged at 25°C: 0.8mOhms | | | |
| Self discharge | 3% of capacity declined per month at 25°C (average) | | | |
| Capacity Affected by Temp.(10HR) | 40 °C | 25 °C | 0 °C | -15 °C |
| | 102% | 100% | 85% | 65% |
| Charge Voltage (25°C) | Cycle use | | Float use | |
| | 2.35-2.45V(-5mV/°C), max. Current: 30A | | 2.25-2.30V(-3.3mV/°C) | |

SL21500 (2V150Ah/10hr)

Constant current discharge ratings-amperes at 25°C

| End Point Volts/Cell | 15min | 30min | 1h | 2h | 3h | 4h | 5h | 8h | 10h |
|-------------------------|-------|-------|------|------|------|------|------|------|------|
| 1.60V | 221 | 147 | 97.5 | 55.7 | 41.7 | 33.9 | 29.2 | 19.4 | 16.1 |
| 1.65V | 210 | 141 | 94.1 | 53.8 | 40.4 | 33.0 | 28.5 | 19.1 | 15.9 |
| 1.70V | 199 | 134 | 90.2 | 51.4 | 38.5 | 31.8 | 27.8 | 18.7 | 15.7 |
| 1.75V | 188 | 127 | 86.3 | 49.7 | 37.5 | 30.9 | 27.0 | 18.2 | 15.3 |
| 1.80V | 177 | 120 | 82.2 | 47.4 | 35.8 | 29.7 | 26.0 | 17.8 | 15.0 |

Constant power discharge ratings-watts at 25°C

| End Point Volts/Cell | 15min | 30min | 1h | 2h | 3h | 4h | 5h | 8h | 10h |
|-------------------------|-------|-------|-----|-----|------|------|------|------|------|
| 1.60V | 386 | 294 | 184 | 118 | 79.8 | 66.5 | 58.5 | 37.7 | 30.8 |
| 1.65V | 365 | 279 | 176 | 114 | 77.9 | 65.2 | 57.5 | 37.2 | 30.4 |
| 1.70V | 344 | 264 | 168 | 110 | 75.8 | 63.6 | 56.3 | 36.6 | 30.0 |
| 1.75V | 323 | 249 | 160 | 106 | 73.5 | 62.0 | 55.1 | 35.7 | 29.2 |
| 1.80V | 301 | 233 | 151 | 101 | 71.0 | 60.3 | 53.8 | 35.1 | 28.8 |

